



METAZA MPX-95

Roland METAZAStudio



Specifications		
Imprintable material	Gold, silver, copper, platinum, brass, aluminum, iron, stainless steel, etc. (Vickers hardness [HV] of the imprint surface must be 200 or less.)	
Loadable material size	Using a base table + base plate : Max. 100 mm (W) × 200 mm (L) × 40 mm (H) (3.9 in. × 7.9 in. × 1.6 in.) or 200 mm (W) × 100 mm (L) × 40 mm (H) (7.9 in. × 3.9 in. × 1.6 in.) Using a base plate only : Max. 100 mm (W) × 200 mm (L) × 70 mm (H) (3.9 in. × 7.9 in. × 2.8 in.) or 200 mm (W) × 100 mm (L) × 70 mm (H) (7.9 in. × 3.9 in. × 2.8 in.) *The above are for when the cover is closed. When the cover is open, there is no limit on how large the material can be, but the imprint area of the material must be placed within the imprint area.	
Imprint area	Maximum Imprintable Area	80 mm (W) × 80 mm (D) × 70 mm (H) (3.2 in. × 3.2 in. × 2.8 in.)
	Recommended imprint area	50 mm (W) × 50 mm (D) × 70 mm (H) (2.0 in. × 2.0 in. × 2.8 in.)
Resolution	529 dpi (High resolution), 353 dpi (Photo), 265 dpi (Text), 1058 dpi (Vector)	
Imprint direction	Unidirectional imprinting or bidirectional imprinting (Selectable with Windows driver)	
Imprint speed (Default)	50 mm/sec (2.0 in./sec) (Photo), 33 mm/sec (1.2 in./sec) (High resolution/Text), 24 mm/sec (0.94 in./sec) (Vector)	
Interface	USB	
Power requirements	Dedicated AC adapter	AC 100 to 240 V ±10%, 50/60 Hz
	Main unit	DC 19 V, 1.2 A
Power consumption	Approx. 21 W	
Operating noise	70 dB (A) or less	
Operating temperature	10 to 30 °C (50 to 86 °F)	
Operating humidity	35 to 80 % (no condensation)	
External dimensions	286 mm (W) × 383 mm (D) × 308 mm (H) (11.3 in. (W) × 15.1 in. (D) × 12.2 in. (H))	
Weight	12 kg (26.5 lb.)	
Included items	AC adapter, power cord, test-use material, USB cable, Roland Software Package CD-ROM, user's manual, etc.	

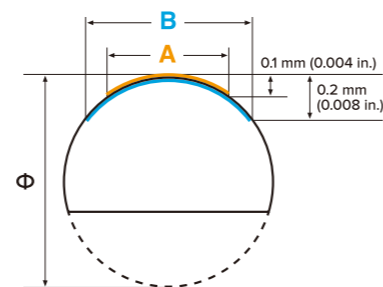
System Requirements for USB Connection	
Computer	Model preinstalled with Windows 10, 8.1, or 7 (32- or 64-bit), or upgraded computer originally preinstalled with Windows 7 or later
USB cable	Use the included USB cable.

Options		
	Model	Description
DPM Kit	DK-1	Pinching vise × 1 pce., Movable center vise × 1 pce., Head caps (round bottom) × 30 pcs., Head caps (flat bottom) × 10 pcs., Clamp pins (4 pcs. × large, 4 pcs. × small), Roland Software package CD × 1 pce., etc.
Head unit and head caps for replacement	MPH-90	Head unit × 1 and head caps × 4 pcs.
Replacement head caps for round surfaces	CAP-HEAD MPX-90	5 pcs.
Replacement durable head caps for flat surfaces	DURABLE HEAD-CAP MPX, FLAT SURFACE	5 pcs.

Conditions when imprinting curved surfaces

Choose material when imprinting on a curved surface taking into consideration the following limitations. These figures show the imprinting area possible for a curved surface and the area that the marking pin can reach with respect to the diameter of the cylinder when the head cap (CAP-HEAD MPX-90) is attached to the head unit. However, these limitations do not assure the quality of the photographic image.

Diameter of cylinder with extended curved surface (φ)	Recommended Imprint area (A)	Area reached by the marking pins (B)
10 mm (0.4 in.)	2.0 mm (0.08 in.)	2.8 mm (0.11 in.)
20 mm (0.8 in.)	2.8 mm (0.11 in.)	4.0 mm (0.16 in.)
30 mm (1.2 in.)	3.4 mm (0.14 in.)	4.8 mm (0.19 in.)



Desktop Impact Printer for Marking of UDI Barcodes

METAZA MPX-95

Imagine. Roland

AUTHORIZED DEALER:

Printed in Japan. RDG-416108299 16 NOV E-2 D-S

www.rolanddg.com



Affordable track and trace

Marking solution for medical instruments and industrial components

The MPX-95 direct part marking (DPM) impact printing solution marks two-dimensional DataMatrix barcodes as small as 1 mm on a wide variety of medical instruments including forceps, tweezers, scalpels and other surgical tools. This versatile technology imprints unique device identification (UDI) numbers, text, logos and graphics quickly and affordably on virtually any metal surface*1 for easy tracking and traceability. Designed for ease of use, the solution comes with its own software for producing precise, durable imprints that remain readable throughout the lifetime of the product.*2

*1 Vickers hardness (HV) of the surface of imprintable materials must be 200 or less. *2 Computer and barcode scanner required for a complete UDI system.



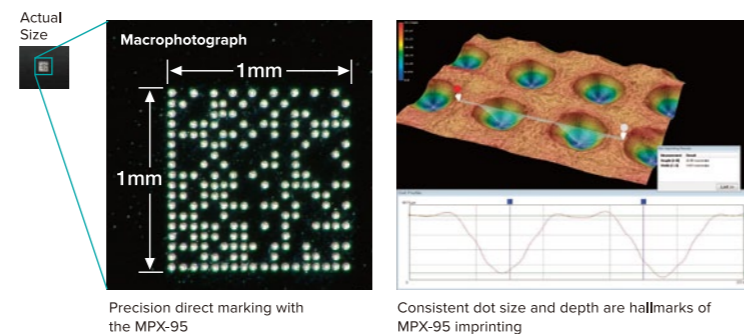
METAZA
MPX-95

PRECISE

High-Speed Marking with Roland's Dot Impact Technology

The MPX-95's durable diamond-tipped stylus directly imprints on titanium, stainless steel, platinum, silver, gold and other hard metals. Engineered for speed and precision, the MPX-95 can quickly imprint a 2D code with 26 characters inside an area as small as one square millimeter.* The MPX-95 does not burn or remove material on impact, so generates no odor or debris and leaves the marked area protected from corrosion and oxidation. No daily maintenance is required.

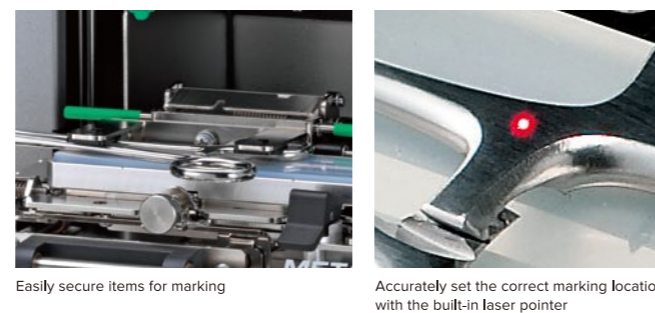
* Quality is determined by the resolution of the barcode scanner.



COMPACT & EASY TO USE

Set up is Easy with the Included Vise and Built-In Laser Pointer

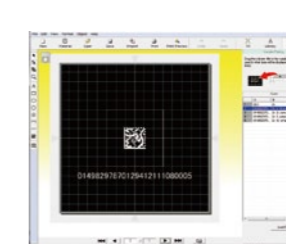
With the MPX-95 no special training is required. The included METAZA Studio software instantly converts numerical data to 2D DataMatrix barcodes that meet GS1 and other 2D DataMatrix formats, including QR codes. For fast set up and accurate results, simply secure the item to be marked in the multi-purpose vise and use the built-in laser pointer to locate the center of the material to be marked. When compared with other DPM technologies, the MPX-95's ease of use, compact footprint and energy-efficient design, make it the ideal solution for small office or lab environments.



INTUITIVE SOFTWARE

Dedicated Software Marks 2D DataMatrix Barcodes, Text and Logos to Identify or Brand Devices

The included METAZA Studio software features a 2D DataMatrix barcode generator. To create a unique barcode, simply select the barcode icon from METAZA Studio's main screen and enter the appropriate UDI numbers. The software does the rest, creating a 2D DataMatrix barcode which can then be imprinted. METAZA Studio also imports CSV spreadsheet files for variable data printing. This allows you to quickly and easily add a unique 2D DataMatrix barcode to individual devices in a series. Support for jpg, bmp and Adobe Illustrator 8 file formats enables you to import logos and other custom branding elements.



Included METAZA Studio Software

■ Import CSV files for variable data printing

UDI	Doctor	Specialty
01498297870129412111080005	Dr. K. McCoy	Neurosurgery
01498297870129412111080006	Dr. B. Johnson	Orthopaedics
01498297870129412111080007	Dr. E. Jones	Obstetrics and Gynecology
01498297870129412111080008	Dr. N. White	Pediatric Surgery

■ Imprint logos and other graphics to brand devices



VERSATILE

Mark Instruments and Objects in a Wide Range of Shapes and Sizes

For even greater versatility, the base plate and base unit can be removed for imprinting onto much larger medical tools, devices and industrial equipment. The MPX-95 DPM solution also includes a medical sliding vise with flexible over-grip to secure surgical instruments and other industrial components and a sliding center vise, all enabling users to effectively mark onto intricately shaped surgical equipment, machinery and tools.



* A separate barcode scanner is required for tracking